



wolverhampton | 2012
racecourse & conference centre





WELCOME TO WOLVERHAMPTON RACECOURSE

The perfect venue for racing, entertainment and events, Wolverhampton Racecourse is the UK's busiest racecourse with over 100 fixtures scheduled for 2012.

Horse racing has had a home in Wolverhampton for over 100 years, and Wolverhampton Racecourse is proud to carry on this tradition. With a Poly Track all-weather surface and floodlights, we race all year round. With 3 feature days and 16 Saturday evening fixtures, we cater for all types of race goers, from the seasoned enthusiast to the first time visitor. We also have a packed mid-week schedule, with afternoon and evening fixtures.

Our Saturday night entertainment in the Ringside Suite is second to none, with live bands playing throughout the year! Finish off a great nights racing by dancing the night away with friends and family. With a great mix of tribute acts, live party bands and a fantastic resident DJ, we are sure to offer a cracking evening of merriment for all!

Our panoramic restaurant, Horizons, really must be seen to be believed. With awe inspiring views across the racecourse and a delicious 3 course meal cooked by our fantastic catering team, spend the evening with us and marvel at the racing and cuisine available.

Our recently refurbished hospitality suites offer you and your guests a superb choice of flexibility to meet both your personal and business requirements. With 8 private suites seating between 16 - 64 guests along with the larger Cleveland Suite, Wolverhampton Racecourse offers the perfect entertaining venue.

We also have the fantastic added convenience of a hotel on-site. The Holiday Inn adjoins the racecourse and offers 54 comfortable rooms and recognised standards of service. The hotel is perfect for those attending racing or conference events.

Wolverhampton Racecourse is one of the leading event venues in the West Midlands, but don't just take our word for it, come and visit us today!

For further information please call **01902 390000** or email info@wolverhampton-racecourse.co.uk

Alternatively visit:
www.wolverhampton-racecourse.co.uk.

Happy Racing!



THE FIXTURES - JANUARY TO JULY 2012

	Date	Time	Entertainment
Jan	Thursday 5 th	4.10 p.m.	
	Friday 6 th	4.15 p.m.	
	Monday 9 th	2.25 p.m.	
	Friday 13 th	4.10 p.m.	
	Monday 16 th	2.25 p.m.	
	Thursday 19 th	4.30 p.m.	
	Friday 20 th	4.20 p.m.	
	Monday 23 rd	2.00 p.m.	
	Friday 27 th	4.40 p.m.	
	Monday 30 th	2.00 p.m.	
Feb	Thursday 2 nd	5.00 p.m.	
	Friday 3 rd	4.55 p.m.	
	Monday 6 th	2.20 p.m.	
	Thursday 9 th	5.10 p.m.	
	Friday 10 th	5.10 p.m.	
	Saturday 11th	6.50 p.m.	Bootleg Abba
Monday 13 th	2.40 p.m.		
Friday 17 th	5.15 p.m.		
Monday 20 th	2.15 p.m.		
Friday 24 th	5.30 p.m.		
Monday 27 th	2.30 p.m.		
Mar	Friday 2 nd	5.40 p.m.	
	Thursday 8 th	5.30 p.m.	
	Friday 9 th	5.50 p.m.	
	Saturday 10th	2.15 p.m.	Pro/Am Darts Challenge
	Thursday 15 th	5.45 p.m.	
Friday 16 th	5.50 p.m.		
Mar	Saturday 17th	6.20 p.m.	Irish Night
	Thursday 22 nd	2.00 p.m.	
	Friday 23 rd	5.40 p.m.	
	Thursday 29 th	2.30 p.m.	
	Friday 30 th	5.55 p.m.	
Apr	Wednesday 4 th	6.00 p.m.	
	Thursday 12 th	6.00 p.m.	
	Friday 13 th	6.00 p.m.	
	Saturday 14th	6.20 p.m.	The Bon Jovi Experience
	Monday 16 th	2.00 p.m.	
	Thursday 19 th	6.00 p.m.	
	Saturday 21st	6.20 p.m.	Rock and Pop Night
	Tuesday 24 th	2.00 p.m.	
	Thursday 26 th	2.00 p.m.	
	Monday 30 th	6.00 p.m.	
May	Friday 4 th	2.00 p.m.	
	Monday 14 th	2.00 p.m.	
	Monday 21 st	2.00 p.m.	
Jun	Thursday 7 th	2.00 p.m.	
	Monday 18 th	2.00 p.m.	
	Monday 25 th	2.00 p.m.	
Jul	Monday 2 nd	2.00 p.m.	
	Tuesday 10 th	2.00 p.m.	
	Monday 16 th	6.00 p.m.	
	Monday 30 th	6.00 p.m.	

THE FIXTURES - AUGUST TO DECEMBER 2012

	Date	Time	Entertainment
Aug	Monday 6 th	6.00 p.m.	
	Monday 13 th	6.00 p.m.	
	Monday 20th	2.00 p.m.	Family Fun Day
	Wednesday 29 th	6.00 p.m.	
	Friday 31 st	6.00 p.m.	
Sep	Monday 3 rd	2.00 p.m.	
	Saturday 8th	6.20 p.m.	Ladies Evening
	Thursday 13 th	5.30 p.m.	
	Friday 14 th	5.30 p.m.	
	Monday 17 th	2.00 p.m.	
	Friday 21 st	5.30 p.m.	
	Saturday 22nd	6.20 p.m.	The Fab 4
Thursday 27 th	5.30 p.m.		
Friday 28 th	5.30 p.m.		
Saturday 29th	6.20 p.m.	Queen II	
Oct	Thursday 4 th	5.30 p.m.	
	Friday 5 th	5.30 p.m.	
	Saturday 6th	6.20 p.m.	One Stop Boogie
	Monday 8 th	2.00 p.m.	
	Friday 12 th	5.30 p.m.	
	Saturday 13th	6.20 p.m.	Re-Take That
	Friday 19 th	5.30 p.m.	
	Saturday 20th	6.20 p.m.	Soul & Motown Night
Thursday 25 th	5.30 p.m.		
Friday 26 th	5.30 p.m.		
Saturday 27th	6.20 p.m.	Atomic Jones	
Nov	Friday 2 nd	4.30 p.m.	
	Monday 5 th	2.00 p.m.	
	Thursday 8 th	4.30 p.m.	
	Friday 9 th	4.30 p.m.	
	Friday 16 th	4.30 p.m.	
	Saturday 17th	6.20 p.m.	Michael Jackson Tribute
	Monday 19 th	2.00 p.m.	
	Friday 23 rd	4.30 p.m.	
	Saturday 24th	6.20 p.m.	Black Eyes Peaz
	Friday 30 th	4.30 p.m.	
Dec	Saturday 1st	6.20 p.m.	Christmas Party Night
	Monday 3 rd	1.30 p.m.	
	Tuesday 4 th	1.30 p.m.	
	Thursday 6 th	4.00 p.m.	
	Friday 7 th	4.00 p.m.	
	Saturday 8th	6.20 p.m.	Christmas Party Night
	Friday 14 th	4.00 p.m.	
	Saturday 15th	6.20 p.m.	Christmas Party Night
	Monday 17 th	1.30 p.m.	
	Friday 21 st	4.00 p.m.	
Wednesday 26th	1.30 p.m.	Boxing Day	
Thursday 27 th	4.00 p.m.		
Friday 28 th	4.00 p.m.		

Please note: all first race times are subject to change. Please visit www.wolverhampton-racecourse.co.uk for updated race times.





PRICING INFORMATION

Adult prices shown are per person. Accompanied under 18's are admitted FREE of charge to the enclosures.

		Grandstand	Punters Package (minimum 6 people)	Punters Package+ (minimum 6 people)	Premier	Horizons Restaurant Package	Ringside Restaurant Package	Private Hospitality Suites
Jan	Monday - Friday	FREE	N/A	N/A	£5.00	£33.95	N/A	£69.00 +VAT
	Children 5 -11 yrs	FREE	N/A	N/A	FREE	£19.95	N/A	£30.00 +VAT
	Children 12-17 yrs	FREE	N/A	N/A	FREE	£29.95	N/A	£50.00 +VAT
Feb - Nov	Monday - Friday	£10.00	£15.00	£20.00	£15.00	£39.95	N/A	£69.00 +VAT
	Saturday	£10.00	£15.00	£20.00	£20.00	£46.95	£29.95**	£74.00 +VAT
	Children 5 -11 yrs	FREE	N/A	N/A	FREE	£19.95	£16.50	£30.00 +VAT
	Children 12-17 yrs	FREE	N/A	N/A	FREE	£29.95	£26.50	£50.00 +VAT
Dec	Monday - Friday	£10.00	£15.00	£20.00	£15.00	£39.95	N/A	£69.00 +VAT
	Children 5 -11 yrs	FREE	N/A	N/A	FREE	£19.95	N/A	£30.00 +VAT
	Children 12-17 yrs	FREE	N/A	N/A	FREE	£29.95	N/A	£50.00 +VAT
	Saturday	£10.00	£15.00	£20.00	£20.00	£59.00	£44.50	£80.00 +VAT
	Children 5 -11 yrs	FREE	N/A	N/A	FREE	£59.00	£44.50	£80.00 +VAT
	Children 12-17 yrs	FREE	N/A	N/A	FREE	£59.00	£44.50	£80.00 +VAT
Boxing Day	Adults	£15.00	N/A	N/A	£25.00	£65.00	£49.50	£65.00
	Children 5 -11 yrs	FREE	N/A	N/A	FREE	£39.00	£29.50	£39.00
	Children 12-17 yrs	FREE	N/A	N/A	FREE	£57.50	£44.50	£57.50

** Not available on 10th March 2012.



TICKET INFORMATION

For further information please call **01902 390000** or email **info@wolverhampton-racecourse.co.uk**.



ENTERTAINMENT TICKETS

After racing entertainment is a great way to finish off the night. Entertainment is included in the Ringside and Horizons Package price. We do sell a limited number of Premier Enclosure tickets with the added bonus of entertainment - book early to avoid disappointment as we sell the tickets on a first come first serve basis.

PRE-PAID TICKETS FOR COLLECTION

Pre-booking race tickets is the best way to guarantee your favourite spot at the races. Pre-paid tickets can be collected at the racecourse but we do require:

- The presentation of the credit / debit card you paid with.
- The presentation of an official document containing the name and address used when placing the order.

ANNUAL PASS HOLDERS

If you enjoy coming to Wolverhampton for every meeting, why not purchase an Annual Pass! The dates run from 1st April 2012 – 31st March 2013, and entitles you to entry into the Premier Enclosure, and also offers fantastic benefits for other UK racecourses. Total charge is £275.00.

DISCOUNTS

We offer fantastic discount rates for students and OAP's.

The Senior Citizens' Discount Card, available for a one off fee of £3.50, entitles you to £2.00 off either Grandstand or Premier Enclosure entry. Proof of age and 2 passport photos are required to join.

For students we offer £2.00 off Grandstand admission on production of a valid NUS Card (excluding Boxing Day).

REGISTERED CARERS

Registered carers of disabled guests are admitted **FREE**.

PARKING

There is **FREE** parking for 1500 vehicles, including a dedicated coach park.

PUNTERS PACKAGE

The Punters Package is a great way to enjoy all the thrills and excitement at Wolverhampton Racecourse. This great racing offer gives you a fantastic saving of £11.00*.

Tickets are ideal for first time groups of punters and regulars alike, with a fantastic saving to be had by all! If you enjoyed the night so much, come back again, the package also includes a discounted return voucher.

Get the best racing package around by purchasing the Punters Package or Punters Package+ (available for groups of 6 or more)!

The Punters Package costs just **£15.00**, saving you £11.00!

- Grandstand admission
- Racecard
- 3 drinks vouchers
- Discounted bet
- Half price return



If you would like to add food to your package try the Punters Package+ for just **£20.00!**

*Value £26.00 if bought separately.

For further information please call **01902 390000** or email **info@wolverhampton-racecourse.co.uk**



The Punters Package is just £15.00 per person.





LIVE ENTERTAINMENT - RINGSIDE RESTAURANT

Wolverhampton Racecourse has a renowned reputation for offering superb live entertainment. Visit us on a Saturday for an evening of thrilling racing and fantastic live music!

Our Ringside and Horizons Restaurant packages offer admission, a racecard, a 3 course meal and entry into the live entertainment (Ringside diners will retain their seating for the evening).

We have a range of live music acts booked throughout the year, make sure you always book early to avoid disappointment!

2012 also sees St. Patrick's Day being celebrated at the racecourse. Enjoy the craic and have a pint of black stuff with U2 cover band, Achtung Baby!

Please refer to page 6 for ticket prices.

For further information please call **01902 390000** or email **info@wolverhampton-racecourse.co.uk**

A limited number of entertainment tickets will be available to those booking Premier tickets in advance. Whilst additional seating is provided, we are unable to guarantee seats and tables for the entertainment guests not dining in the Ringside Restaurant.

Date	Entertainment
11 th Feb	Bootleg Abba
17 th March	Irish Night with U2 tribute band Achtung Baby
14 th April	The Bon Jovi Experience
21 st April	Rock and Pop Night with live band Hipster
8 th September	Ladies Evening with Battle of the Divas
22 nd September	The Fab 4 Beatles tribute band
29 th September	Queen II tribute band
6 th October	70's v 80's Night with One Stop Boogie
13 th October	Re-Take That
20 th October	Soul and Motown Night
27 th October	Live band Atomic Jones
17 th November	Michael Jackson Tribute
24 th November	Tribute band Black Eyed Peaz
1 st December	Christmas Party Night
8 th December	Christmas Party Night
15 th December	Christmas Party Night





LINCOLN TRIAL DAY - SATURDAY 10TH MARCH

The only Saturday afternoon racing fixture of the year at Wolverhampton Racecourse is certainly something to shout about.

2 prestigious races, the Lincoln Trial and the Lady Wulfruna stakes will be run, broadcast live on Channel 4. If that's not enough, darts fans will be in their element.

Dreams could come true at the racecourse if you're a darts fan, with the opportunity to partner former world darts champions Eric Bristow and Keith Dellar in a Pro/Am Darts Challenge after racing. Step up to the ockey to throw 9 darts between races, with the 2 highest scorers going on to play these 2 heavy weights of the darting world! If racing and darts are your hobbies, this is a must for you!

Please refer to page 6 for ticket prices.

For further information please call **01902 390000**
or email info@wolverhampton-racecourse.co.uk



Accompanied under 18's are admitted FREE and adult tickets are available from just £10 per person.





Rastamouse

© 2011 The Rastamouse Company Limited.
Based on the books by Genevieve Webster and Michael de Souza
www.rastamouse.com



FAMILY FUN DAY - MONDAY 20TH AUGUST

A great day for the whole family, with racing for the adults and entertainment for the kids.



Pop along to soak up the family friendly atmosphere at Wolverhampton Racecourse. With free entertainment including a large bouncy castle, soft play area with inflatable surround, unlimited candy floss stall, gladiator duel, circus workshop and a bungee run, what a great way to spend a sunny August afternoon.

If that's not enough, Rastamouse, the skateboarding, ska-jammin', super cool-mouse, will be making personal appearances throughout the day, so don't forget to bring your camera!

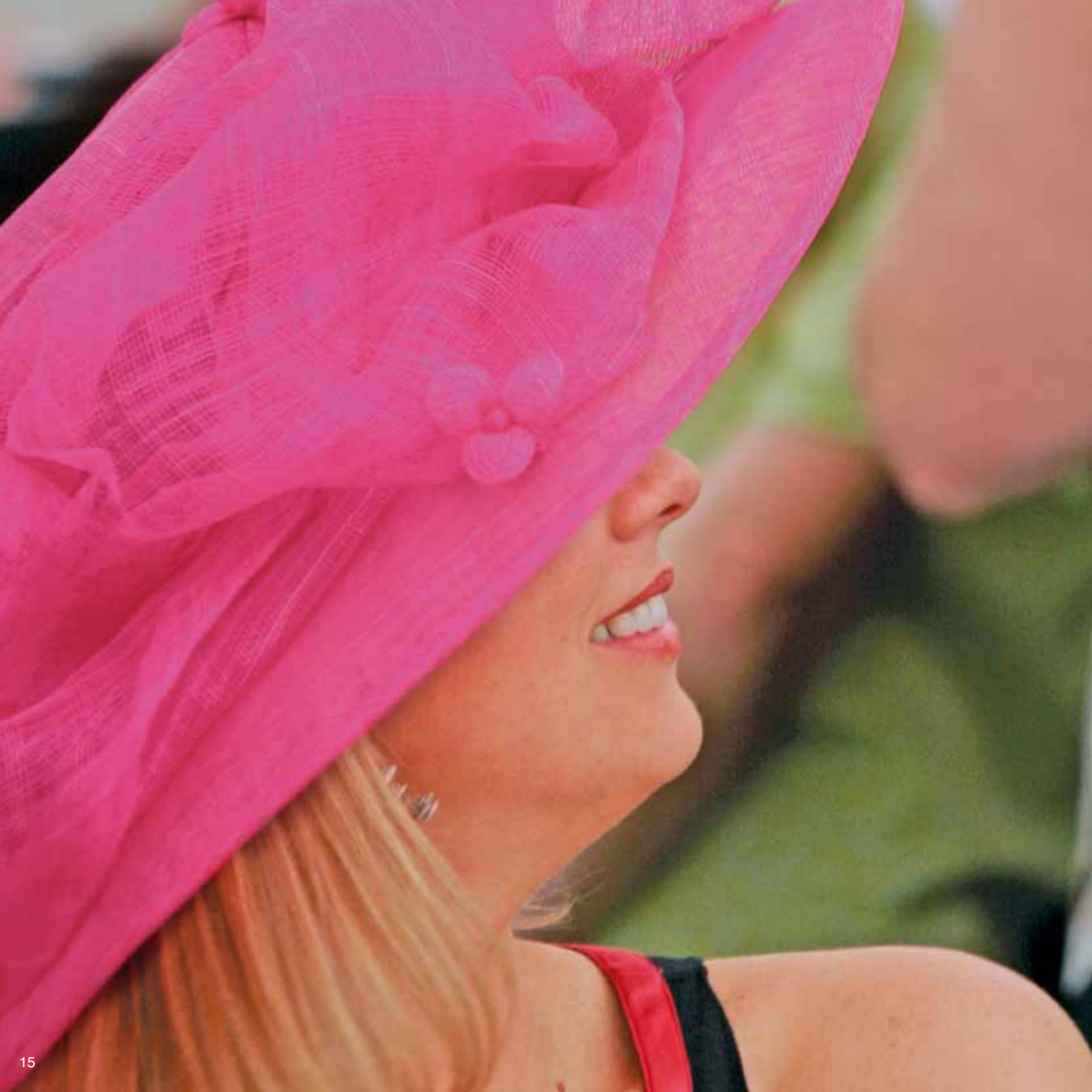
Please refer to page 6 for ticket prices.

For further information please call **01902 390000**
or email info@wolverhampton-racecourse.co.uk



Adult tickets are available from just £10 per person.





LADIES EVENING - SATURDAY 8TH SEPTEMBER

The highlight of the racing calendar at Wolverhampton Racecourse, Ladies Evening is one of racing's greatest traditions and one that Wolverhampton Racecourse enjoys the most.

A great day for couples and families alike, Ladies Evening 2012 will be bigger and better than ever! Dressing to impress is certainly the way to go for this event, with prizes for Best Dressed Lady, Best Hat and new for 2012, Best Shoes.

Enjoy the Ladies Evening experience with one of our dining and entertainment packages in the Horizons and Ringside Restaurants. If the excitement and atmosphere of the Grandstand Enclosure is more your thing, then we have lots to offer including live outdoor entertainment after racing from superb band Battle of the Divas.

Booking early is definitely the way to go, with another record crowd expected in 2012.

Please refer to page 6 for ticket prices.

For further information please call **01902 390000**
or email **info@wolverhampton-racecourse.co.uk**

The live entertainment from Battle of the Divas is open to all race goers, restaurant diners can also enjoy a lively disco until late.



Accompanied under 18's are admitted FREE and adult tickets are available from just £10 per person.





BOXING DAY - WEDNESDAY 26TH DECEMBER

One of the busiest days at the racecourse, Santa may have gone home but we'll be offering a festive day of racing!

Come along to enjoy a great days racing in our Grandstand or Premier Enclosure or why not book a restaurant or hospitality package.

Private Hospitality Suites are perfect for celebrating with family and friends during the festive season and can seat 16 - 64 guests in superb comfort.

The Horizons Restaurant offers a perfect view of the course, getting you as close to the action as you can get whilst enjoying the cosy surroundings.

If having a table full of friends and family sounds like a good day, the Ringside Restaurant is for you. With the racing projected onto 3 large screens, you're sure not to miss one bit of the action.

Please refer to page 6 for ticket prices.

For further information please call 01902 390000 or email info@wolverhampton-racecourse.co.uk



Boxing Day racing is a great day out for the whole family. Accompanied under 18's are admitted FREE and adult tickets are available from just £15 per person.





ENCLOSURES

The racecourse enclosures offer a great mix of comfort, food and dining options, with the added bonus of easy access to the betting facilities.

THE PREMIER ENCLOSURE

THE PREMIER BAR

The Premier Bar is a comfortable lounge providing bar and betting facilities to ticket holders. Superb views across the racecourse and access onto the stands allow punters to have a great racing experience. There are also TV's situated throughout the bar, allowing a close up view of the action. Sandwiches and hot and cold snacks are available.

BETTING OUTLETS

Tote and Ladbrokes betting facilities are available in the Premier Enclosure, or the bookmakers next to the track are just a short walk away.

DISABLED ACCESS AND FACILITIES

Wheelchair access to all public floors is via lifts (equipped with braille buttons) in the parade ring entrance, just off the hotel foyer. A toilet suitable for wheelchair users is on the first floor corridor.

DRESS CODE

The dress code is smart / casual.

PREMIER WITH ENTERTAINMENT OPTION

For Saturday evenings, a limited number of Premier with entertainment tickets will be available, subject to availability. Early booking for these tickets is essential.

THE GRANDSTAND ENCLOSURE

BARS AND RESTAURANTS

The **Weigh Inn** is a lively bar situated between the parade ring and track, offering a selection of pub favourites, with great views down the length of the stand.

The **Chasers Bar** is situated on the ground floor, open Saturday evenings and Boxing Day. The bar is a great place for a quick drink and to meet friends.

The **Paddock Grill**, situated in the main Concourse on the ground floor, is all about quality burgers. Grilled in front of you and finished the way you want them, burgers don't come better than this.

The **Parade Restaurant** is situated within the Holiday Inn Hotel, and is the perfect place to meet guests and friends before racing begins!

BETTING OUTLETS

Tote and Ladbrokes betting facilities are available in the Concourse, or the bookmakers next to the track are just a short walk away.

DISABLED FACILITIES

Bars and restaurants on the ground floor are accessible by wheelchair. There are also toilets accessible by wheelchair in the Concourse and one just off the hotel foyer.

DRESS CODE

Informal dress is acceptable in the Grandstand.





PRIVATE HOSPITALITY SUITES

Set within the Premier Enclosure opposite the winning post, the recently refurbished hospitality suites are great places to entertain guests, colleagues or customers for that special event.

SUITE DETAILS

Our recent refurbishment has breathed new life into the spacious and modern suites. With a prime position on the first floor of the Grandstand, including a private balcony, the suites are perfect for guests to enjoy the atmosphere and excitement of the racing in the comfort of a private suite.

With flexible options for you and your guests, the suites can accommodate 10 – 64 people.

If you are looking for more space to accommodate larger parties, look no further than the Cleveland Suite. Again, this suite has direct access to the Grandstand, with a balcony overlooking the parade ring. To top this great room off, guests also have access to a private bar within the suite.

COMBINE BUSINESS WITH PLEASURE

Why not combine that important conference or meeting with an afternoon or evening of racing. With flexible packages to cater for small or large parties, the racecourse is the perfect entertaining venue. Packages are for 10+ guests.



Please refer to page 6 for ticket prices. Packages can be tailored to meet your requirements.





RINGSIDE RESTAURANT

The Ringside Restaurant is the racecourse's traditional carvery restaurant, open for Saturday evening race meetings and Boxing Day. This spacious dining area is conveniently situated adjacent to the parade ring and has easy access to the trackside.

This restaurant offers an exciting evening out at exceptional value, including live music into the night! Offering the flexibility of tables from 2 up to the maximum seating capacity for private parties, the Ringside is a great place to enjoy great company with great racing. The Ringside Restaurant is also the perfect place to watch the racing from the comfort of your seat, with the action projected live onto 3 big screens.

PACKAGE

- 3 course carvery meal
- Admission to the racecourse
- A racecard
- Live entertainment after racing

DRESS CODE

The dress code is smart / casual.

DISABLED FACILITIES

The restaurant is situated on the ground floor so is easily accessible by wheelchair. A toilet suitable for disabled guests is situated in the area.

For reservations please call **01902 390000** or email restaurants@wolverhampton-racecourse.co.uk



Please refer to page 6 for Ringside Restaurant package prices.

Ringside





HORIZONS RESTAURANT

The crown jewel of Wolverhampton Racecourse, The Horizons Restaurant, is set high in the main Grandstand and is one of the most stylish dining venues in racing.

The glass fronted panoramic restaurant offers unparalleled views of the racing, bringing the excitement of the races straight to your dining table. With the added bonus of television monitors on your tables, you're ensured that all of the action is relayed direct to your party. Diners can also make their way down to the Ringside Suite on Saturday evenings to enjoy the live entertainment!

Tables are for 2, 4, 6 or 8. A typical evening menu provides a choice of starter, main course and dessert and includes tea or coffee.

PACKAGE

- 3 course meal
- Admission to the racecourse
- A racecard
- Live entertainment after racing*

DRESS CODE

The dress code is smart / casual.

DISABLED FACILITIES

There is access to the top tier of Horizons Restaurant via lifts (equipped with Braille buttons). Hearing loops are available on request.

*On Saturday evenings only, subject to availability. Entertainment is generally in another room. Please check at the time of booking for details.

For reservations please call **01902 390000** or email restaurants@wolverhampton-racecourse.co.uk



Please refer to page 6 for Horizons Restaurant package prices.

h o r i z o n s 





ADVERTISING AND SPONSORSHIP

Sponsorship and advertising at Wolverhampton Racecourse is a great way to expose your brand, company or celebration to a wider audience, and provides great marketing opportunities.

ADVERTISING

With flexible packages to suit most budgets, there are several advertising opportunities available at the racecourse.

These include racecard advertising, trackside hoardings and banner sites.

SPONSORSHIP

A range of sponsorship packages are available and can be tailored to meet your business's needs.

Whether that is a commercial presence through media coverage or making your special occasion more memorable, Wolverhampton Racecourse can offer competitive prices that will help you gain a great amount of coverage.

THE BENEFITS OF ADVERTISING AND SPONSORSHIP

- Every fixture is available to view in 12 million homes in the UK and Ireland through **AT THE RACES**.
- Each race is broadcast into every one of the 8,500 UK betting shops.
- Naming rights to the race, company or personal, published in most daily newspapers, racing press and most evening papers, reaching a potential 30 million readers.
- The opportunity for you or your guests to judge and present the **Best Turned Out Horse** prize.
- Trophy presentation by you or your guests to the winning connections.
- Racecard advertisements.
- Trackside and paddock advertising positions.
- Product placement and trade stand opportunities.
- Data capture opportunities through competitions / prize draws.

For further information call **01902 390000** or email sponsorship@wolverhampton-racecourse.co.uk





MEETINGS AND EVENTS

Wolverhampton Racecourse is a superb venue for events and conferences, with a great range of rooms and packages to suit most budgets.

EXHIBITIONS

The Ringside Suite is the largest pillar free suite in the area, and at 680 square metres along with the adjoining Concourse, can provide 1400 square metres of exhibition space. A great flexible space that can cater for exhibitions and theatre style conferences, the Ringside Suite is perfect for those larger gatherings.

CONFERENCES

Conferences for up to 600 theatre style can easily be accommodated, and our dynamic Events Co-ordinators can work with you to ensure your requirements are met.

WEDDINGS

The venue is suitable for intimate gatherings or larger celebrations of up to 600 guests. The racecourse has a civil licence for up to 100 guests, for those couples wishing to tie the knot overlooking the racecourse.

OUTSIDE SHOWS

With 20 acres of outside parkland including the grassed area inside the track, there is plenty of space for outside events and tented displays.

PARKING

With 1500 parking spaces and being located within 2 miles of Wolverhampton city centre, the venue is ideal for combining business with pleasure.

HOTEL

The on-site Holiday Inn Garden Court Hotel has 54 bedrooms available which includes Wi-Fi, FREE parking and the Parade Restaurant and Bar.



For further information please email events@wolverhampton-racecourse.co.uk or call 01902 390007.





HOLIDAY INN HOTEL

The Holiday Inn Garden Court Wolverhampton, adjoining Wolverhampton Racecourse & Conference Centre offers a warm welcome, a relaxing stay and recognised standards of service.

Whether you're travelling for business or pleasure, the Holiday Inn Garden Court Wolverhampton Hotel is ideal for both. Being located only 1 mile from Wolverhampton city centre, guests are well within reach of city centre shopping, vibrant bars and restaurants; whilst also having easy access to public transport links including Wolverhampton bus and train stations.

The hotel's landscaped surroundings and on-site mini-gym create a relaxing environment. This racecourse hotel has high speed Wi-Fi access in the lounge and throughout the entire hotel, so it's easy to stay in touch. Dine on classic and modern dishes in the Parade Bar and Restaurant, whilst you enjoy the views over the parade ring. What's more, kids aged 12 and below eat for free, making it great value for families.

In room facilities include a modern and extensive entertainment system, giving guests an excellent selection of complimentary Satellite TV channels and a wide array of films via pay movie. All rooms are non-smoking and offer direct dial telephones with voicemail.

The Holiday Inn Garden Court is the perfect choice for meeting your accommodation and conference needs.



Special discounted rates are available for corporate clients and group bookings.





CHRISTMAS AND NEW YEAR

Share the Christmas cheer with Wolverhampton Racecourse, as we host some of the best Christmas parties around!

Christmas celebrations with friends and colleagues are extremely important to you, so we make that extra special effort to ensure you will have a great time!

With years of experience and also the space to cater for the biggest of parties, book Wolverhampton Racecourse for this year's Christmas celebrations.

We are able to offer both racing and non-racing Christmas parties, which include fun, laughter and live entertainment.

NEW YEAR'S EVE GALA PARTY

Our New Year's Eve Gala Party is the perfect way to welcome in 2013 with a delicious meal and live entertainment on offer.

THE FOLLOWING ARE DATES FOR RACING CHRISTMAS PARTIES:

- Saturday 1st December
- Saturday 8th December
- Saturday 15th December

WE ALSO OFFER LIVELY CHRISTMAS PARTIES ON DATES WITHOUT RACING:

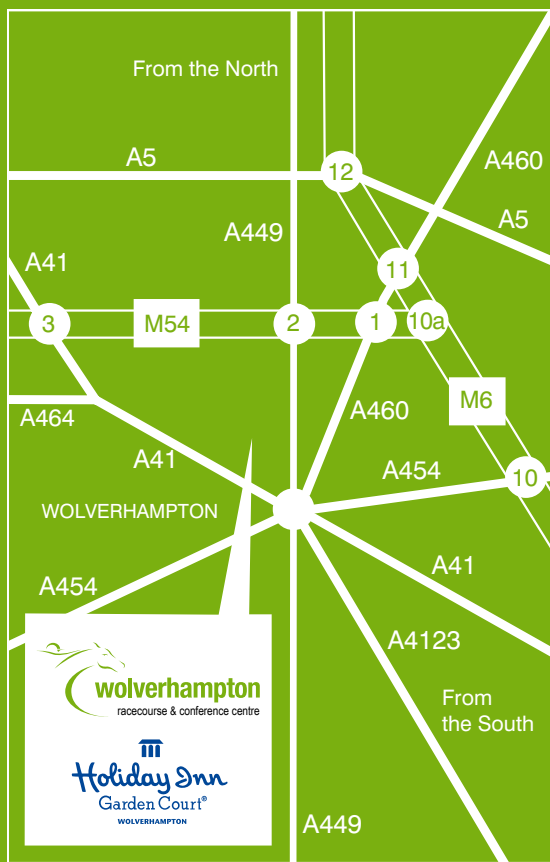
- Friday 7th December – Elvis Christmas Party Night
- Friday 14th December – The Christmas Party
- Friday 21st December – Elvis Christmas Party Night
- Saturday 22nd December – The Christmas Party

For further information please call **01902 390000**.

Alternatively visit:

www.wolverhampton-racecourse.co.uk





HOW TO FIND US

FROM THE M6 NORTH

Leave the M6 at J11 and join the A460 towards Wolverhampton. Join the M54 at J1 Westbound. Continue to J2 and join the A449 towards Wolverhampton. Continue for approximately 3 miles straight over 4 roundabouts. Continue past the viaduct on the right-hand side and at the next roundabout turn right on to Gorsebrook Road. Continue 400 yards passing under the viaduct and turn right. We are situated at the end of the road.

FROM THE M6 SOUTH

Leave the M6 at J10a and join the M54. Continue to J2 and join the A449 towards Wolverhampton. Continue

for approximately 3 miles straight over 4 roundabouts. Continue past the viaduct on the right-hand side and at the next roundabout turn right on to Gorsebrook Road. Continue 400 yards passing under the viaduct and turn right. We are situated at the end of the road.

BY TRAIN

The nearest train station is Wolverhampton Station, which is about 1 mile from the racecourse. There are taxis available from outside the station.

For further train service information, please telephone the National Rail Enquiry Line on **08457 48 49 50**.



Wolverhampton Racecourse & Conference Centre, Dunstall Park, Wolverhampton. WV6 0PE • Tel: 01902 390000

Email: info@wolverhampton-racecourse.co.uk • www.wolverhampton-racecourse.co.uk

Wolverhampton Racecourse is a subsidiary of Arena Leisure plc