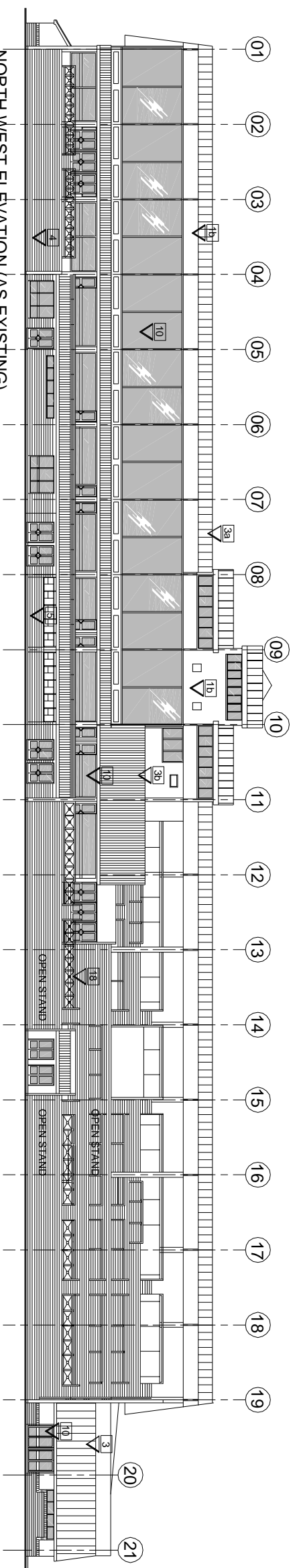
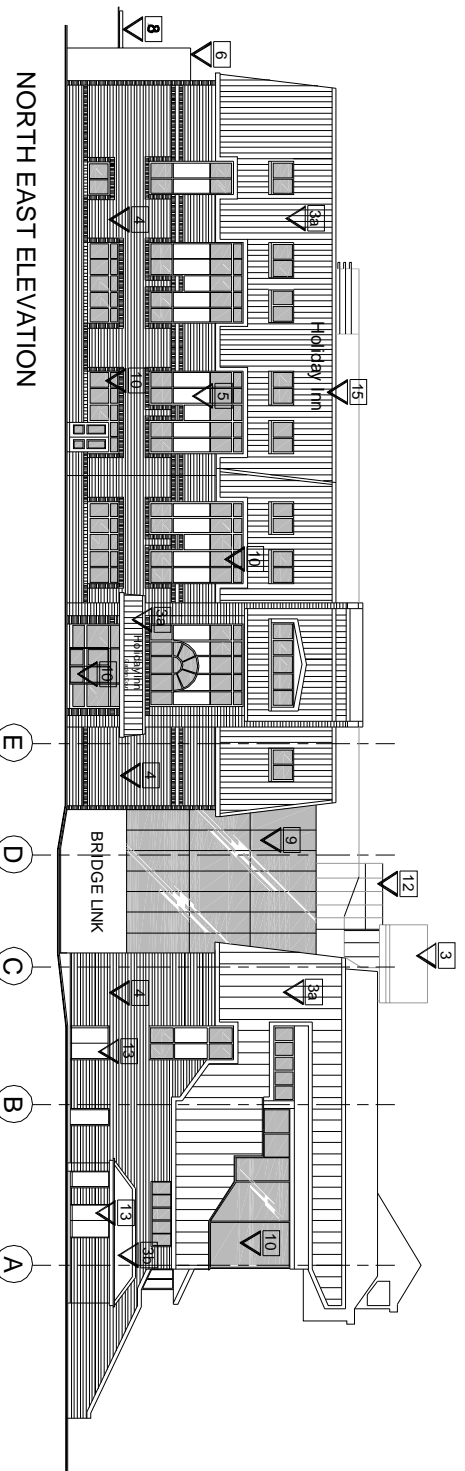


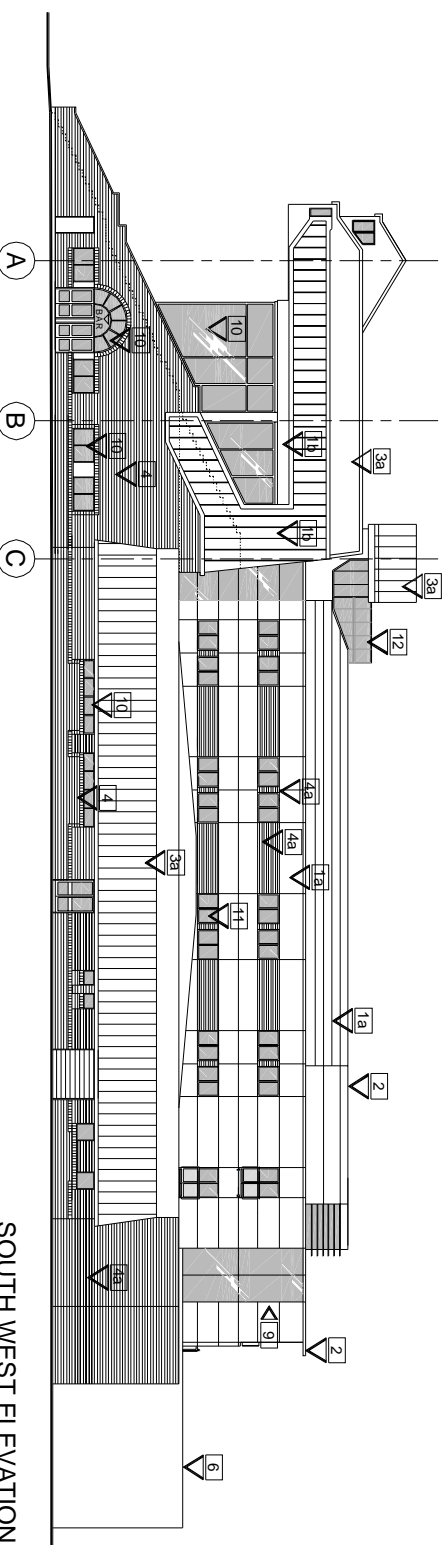
SOUTH EAST ELEVATION



NORTH WEST ELEVATION (AS EXISTING)



NORTH EAST ELEVATION



SOUTH WEST ELEVATION

- 1a. METAL WALL CLADDING PANELS / prefinished, colour: white
- 1b. METAL WALL CLADDING PANELS / prefinished, colour: light grey (EXISTING)
2. METAL ROOF CLADDING AND FLASHING / prefinished, colour: as for fig.1
- 3a. STEEL SHEET ROOF COVER / prefinished, colour: light grey, framing: dark grey (EXISTING)
- 3b. STEEL CORRUGATED SHEET ROOF COVER / prefinished, colour: light grey (EXISTING)
4. BRICKWORK CLADDING / colour: red/brown, natural finish (EXISTING)
- 4a. BRICK TILE CLADDING / colour: red/brown, natural finish- to be as much as possible similar to the fig.4
5. PANEL WALL FINISH / colour: white (EXISTING and ADDED)
6. BLOCKWORK CURVED FEATURE WALL / colour: blue
7. GLAZED BALUSTRADE / transparent white safety glass, stainless steel construction, handrails and posts
8. SUSPENDED MAIN ENTRANCE CANOPY / transparent white safety glass, stainless steel construction with stay bars
9. GLAZED FRAMELESS CURTAIN WALL / internal stainless steel stud construction, sealed safety glass with reflecting blue tint finish
10. WINDOW OR GLAZED DOOR / transparent white double glazing, powder coated frames, colour: green (EXISTING)
11. WINDOW OR GLAZED DOOR / double glazed, safety glass with reflecting blue tint finish, powder coated frames, colour: light grey
12. GLAZED PASS / double transparent white safety glass, powder coated framework, colour: green
13. SOLID DOOR / powder coated steel frame and leaf, colour: green (EXISTING)
14. ROUND COLUMNS / painted blue
15. HOTEL LOGO (black plastic letters, colour: blue) (EXISTING)
16. ZINC PLAIN SHEET ROOF COVER / colour: silver
- 17a. BRISE: SOLEILS OVER GLAZED ROOF / colour: white
- 17b. BRISE: SOLEILS BEYOND GLAZED WALL / metal, colour: dark grey
18. BALCONY BALUSTRADE / steel square and round profiles painted black and red, white panel fill (EXISTING)

NOTE: FIG. 16, 17a, 18 ON OTHER DRAWINGS ONLY  
EXISTING ELEVATIONS SHOWN ALSO ON THE SEPARATE DRAWING

rev.	date	description	by
1	06/01/07	TEXTURES REVISOR, NETWORK OVERCLOCK	KK
A			KK

Alan Colwell Practice Ltd  
Sonia Parva  
Second Floor  
9 Waterloo Road  
Wolverhampton  
West Midlands, WV1 4DU  
tel 01902 423428  
fax 01902 428281  
e mail becp@acpra.co.uk

client  
Aterna Leisure Plc

Project title  
Hotel and Casino Extension  
Wolverhampton Racecourse

Drawing title  
Proposed Elevations

Approval			
drawn by	checked by	date	sheet size
KK/PL	RLT	OCT 2006	A1
Project number	drawing number	revision	scale
05089	283	A	1:200

This drawing and the works depicted on it are the copyright of ACP. It is not to be reproduced, stored in a retrieval system, or transmitted in any form or by any means, electronic, mechanical, photocopying, recording, or by any information storage and retrieval system, without the prior written permission of ACP. Any adaptation to be made to ACP's Intellectual Property Rights must be approved by ACP. The information on this drawing is only valid for the project.