



Photograph CJB Photography



*your venue
in the heart of worcester*





Photograph: CJB Photography



Photograph: CJB Photography



Photograph: CJB Photography



Photograph: CJB Photography

a variety of room sizes

There is so much more to Worcester Racecourse than just racing. The grandstand offers an exceptional town centre venue for events all year round, with an excellent reputation for catering and service.

OPPORTUNITIES INCLUDE:

- Conferences with a choice of suites and break out rooms
- Meetings
- Training days and team building events
- Exhibitions and trade shows
- Banquets and parties
- Weddings
- Christmas parties
- Outdoor events – large grass and tarmac areas available
- Free parking for over 500 cars



Photograph: CJB Photography



catered events for 10-300 people

ROOM CAPACITIES:

- 300 theatre style seating
- 150 cabaret style seating
- 200 banquet style seating
- Five break out rooms

DAILY DELEGATE RATE INCLUDES:

- Hire of all rooms required for the event
- Internet access
- Access from 7am
- A two course lunch (either seated or finger buffet style)
- Two servings of tea, coffee and biscuits
- Water and cordials
- Data projector (Croft Suite), screen, PA system, flipcharts, lectern and stage
- Conference packs and sweets
- Ample free parking on site



Photograph: CJB Photography



Photograph: CJB Photography

picturesque aspects of the river severn

The Racecourse nestles on the banks of the River Severn and offers the perfect romantic setting for weddings and celebrations in its own luxury marquee.

Large outdoor events can be accommodated on the extensive tarmac and grass areas.





Photograph: Les Hurley



Photograph: CJB Photography

a venue for all occasions

The Racecourse marquee is available during the summer months and seats up to 150 guests for dining or can be hired for tented shows.

Christmas parties are very popular during December – the venue can be hired for private parties of 80 – 170 guests. Christmas party nights are also available for smaller groups.

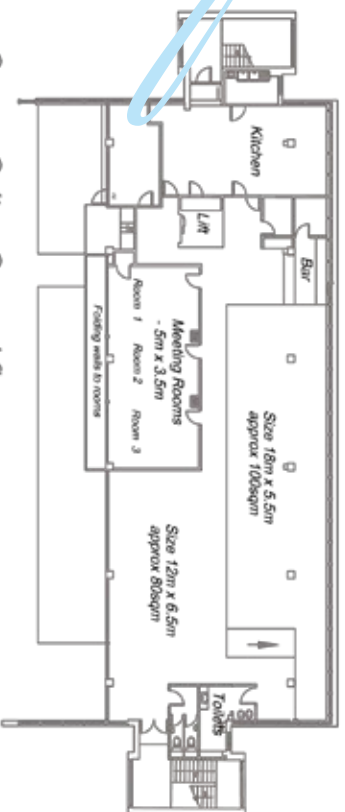
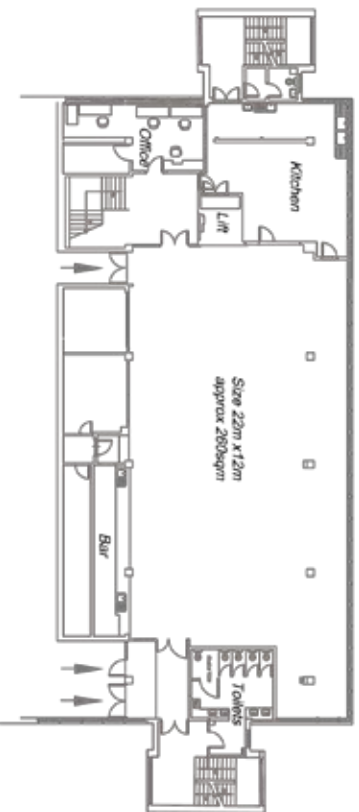
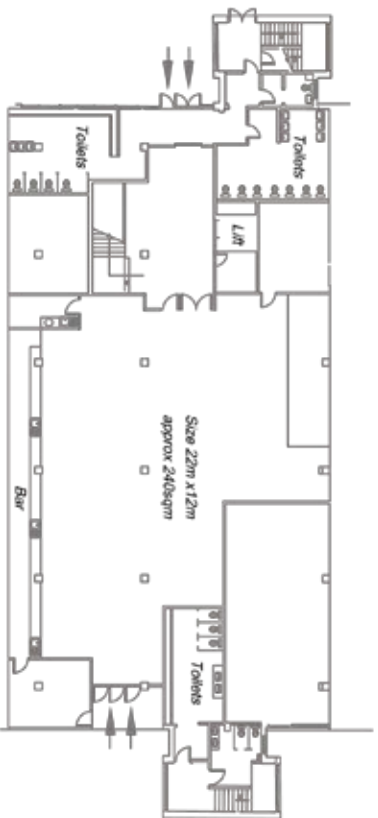


Photograph: CJB Photography



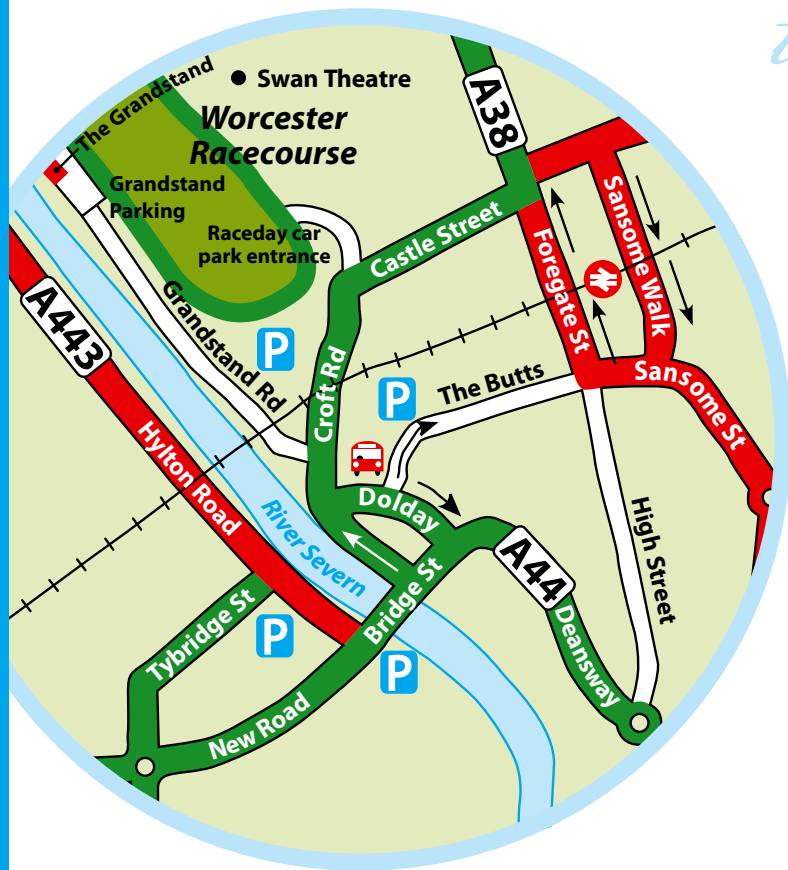
Photograph: CJB Photography

floor plans



ceiling height to all floors 2.9m

the ideal location



Situated in the centre of town, a short distance from the M5 motorway (junctions 6 and 7) and Foregate Street train station, Worcester Racecourse is very easily accessible from north, south, east or west.

HOW TO FIND US

BY CAR: From the north or south – take Junction 6 off the M5 and following the A449 towards Worcester city centre. From the west – take the A443 and A44, both offer good access to the city centre. Follow the brown tourist signs for Worcester Racecourse.

BY RAIL: Trains run direct from London Paddington, Birmingham, Cardiff, Hereford and Bristol to Foregate station, Worcester, which is just 10 minutes walk from the racecourse.



www.worcester-racecourse.co.uk • E-mail: info@worcester-racecourse.co.uk
Worcester Racecourse, Pitchcroft, Worcester, WR1 3EJ
Tel: +44 (0)1905 25364 • Fax: +44 (0)1905 617563
Worcester Racecourse is a subsidiary of Arena Leisure Plc

