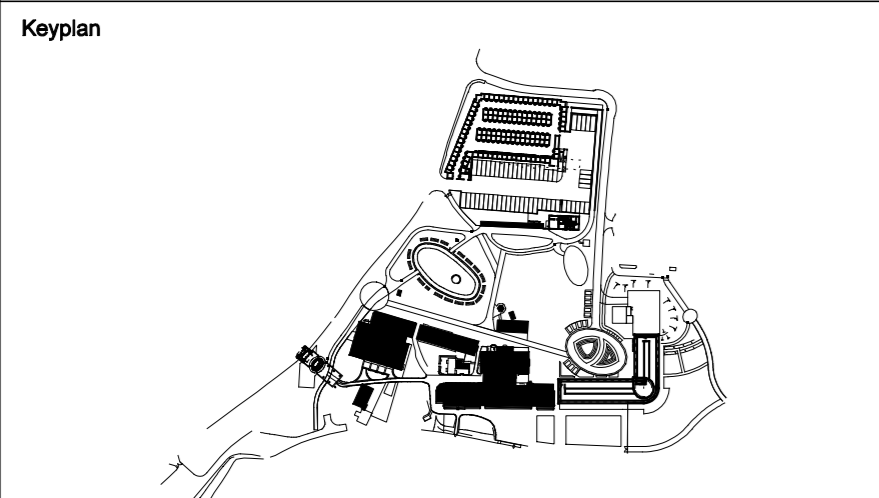
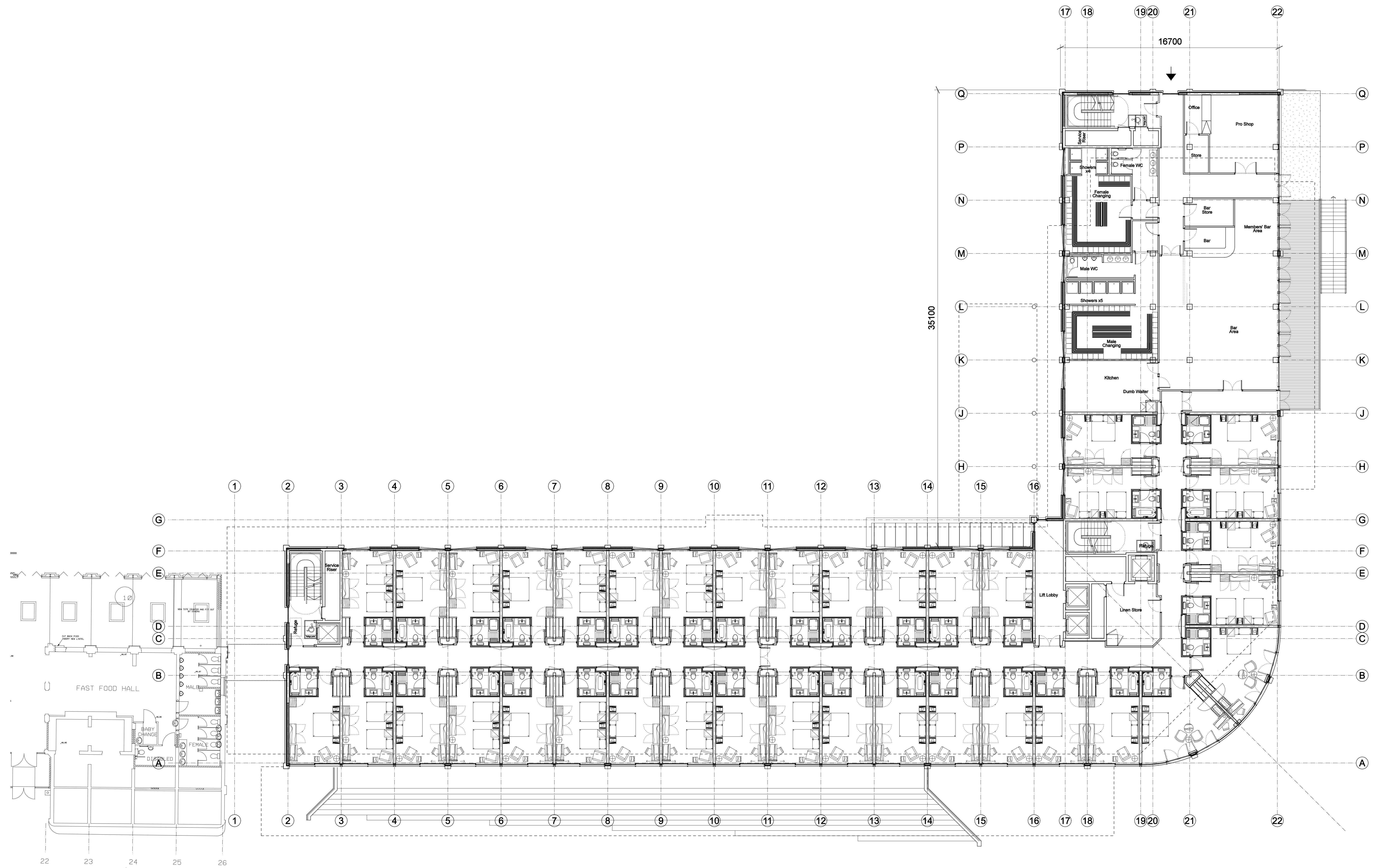
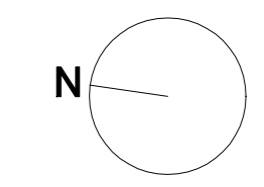


02110201



Notes:  
 1. Do not scale  
 2. Contractor to Check all dimensions and report omissions and errors to the Architect

02 INFORMATION ISSUED TO AIS 25.10.07 JSC  
 01 Issued for detail design 18.09.07 JSC  
 No Revision Date Initial



EPR Architects Limited  
 30 Milbank  
 London SW1P 4DU  
 020 7932 7600  
 www.epr.co.uk



Lingfield Park  
 Silks Building  
 First Floor  
 General Arrangement

INFORMATION 1:100@A0 18.09.07  
 Project No. Type Bldg Number Zone/Lvl Rev  
**9724 - 1 - 01 - 0201 - Z01 01**