



## sycamore

### SIZE

S	M	L	XL	XXL	
To fit chest					
102	107	112	117	122	cm
40	42	44	46	48	in

### YARN

**Rowan Purelife Organic Cotton**  
14 15 16 17 18 x 50gm  
(photographed in Logwood 981)

### NEEDLES

1 pair 3¼mm (no 10) (US 3) needles  
1 pair 3¾mm (no 9) (US 5) needles

3¼mm (no 10) (US 3) circular needle  
Cable needle

### TENSION

22 sts and 30 rows to 10 cm measured over st st  
using 3¾mm (US 5) needles.

### SPECIAL ABBREVIATIONS

**C4B** = slip next 2 sts onto cable needle and leave at back of work, K2, then K2 from cable needle;  
**C4F** = slip next 2 sts onto cable needle and leave at front of work, K2, then K2 from cable needle.

### BACK

Using 3¼mm (US 3) needles cast on 122 [126: 134: 142: 146] sts.

**Row 1 (RS):** K2, \*P2, K2, rep from \* to end.

**Row 2:** P2, \*K2, P2, rep from \* to end.

These 2 rows form rib.

Work in rib for a further 18 rows, dec [inc: inc: dec: inc] 1 st at end of last row and ending with RS facing for next row. 121 [127: 135: 141: 147] sts.

Change to 3¾mm (US 5) needles.

Beg with a K row, work in st st until back measures 13 cm, ending with **WS** facing for next row.

**Next row (WS):** P25 [28: 32: 35: 38], M1P, (P5, M1P) twice, P4, M1P, P11, M1P, P21, M1P, P11, M1P, P4, (M1P, P5) twice, M1P, P to end.

131 [137: 145: 151: 157] sts.

Now work in patt as folls:

**Row 1 (RS):** K16 [19: 23: 26: 29], work next 99 sts as row 1 of chart for body, K to end.

**Row 2:** P16 [19: 23: 26: 29], work next 99 sts as row 2 of chart for body, P to end.

These 2 rows set the sts – central chart with st st at sides.

Keeping sts correct and repeating the 20 row patt rep throughout, cont as set until back meas 41 [42: 41: 42: 41] cm, ending with RS facing for next row.

### Shape armholes

Keeping patt correct, cast off 2 sts at beg of next 2 rows. 127 [133: 141: 147: 153] sts.

Dec 1 st at each end of next 3 [3: 3: 1: 1] rows, then on foll 3 [1: 1: 1: 0] alt rows.

115 [125: 133: 143: 151] sts.

Cont straight until armhole meas 21 [22: 23: 24: 25] cm, ending with RS facing for next row.

### Shape back saddle shoulders

Cast off 12 [14: 15: 17: 18] sts at beg of next 4 rows, then 13 [14: 15: 16: 17] sts at beg of foll 2 rows.

Cast off rem 41 [41: 43: 43: 45] sts, placing markers either side of centre 29 [29: 31: 31: 33] sts.

### FRONT

Work as given for back until 10 rows less have been worked than on back to beg of saddle shoulder shaping, ending with RS facing for next row.

### Shape neck

**Next row (RS):** Patt 44 [49: 52: 57: 60] sts and turn, leaving rem sts on a holder.

Work each side of neck separately.

Dec 1 st at neck edge of next 3 rows, ending with RS facing for next row. 41 [46: 49: 54: 57] sts.

### Shape front saddle shoulder

Dec 1 st at neck edge of next 4 rows **and at same time** cast off 12 [14: 15: 17: 18] sts at beg of next and foll alt row.

Cast off rem 13 [14: 15: 16: 17] sts.

With RS facing, rejoin yarn to rem sts, cast off centre 27 [27: 29: 29: 31] sts, patt to end.

Complete to match first side, reversing shapings.

### SLEEVES

Using 3¼mm (US 3) needles cast on 46 [46: 50: 50: 54] sts.

Work in rib as given for back for 20 rows, inc 0 [1: 0: 1: 0] st at each end of last row and ending with RS facing for next row. 46 [48: 50: 52: 54] sts.

Change to 3¾mm (US 5) needles.

Beg with a K row, work in st st, inc 1 st at each end of 3rd and 4 foll 4th rows, ending with **WS** facing for next row. 56 [58: 60: 62: 64] sts.

**Next row (WS):** P18 [19: 20: 21: 22], M1P, (P10, M1P) twice, P to end. 59 [61: 63: 65: 67] sts.

Now work in patt as folls:

**Row 1 (RS):** K9 [10: 11: 12: 13], work next 41 sts as row 1 of chart for sleeve, K to end.

**Row 2:** P9 [10: 11: 12: 13], work next 41 sts as row 2 of chart for sleeve, P to end.

These 2 rows set the sts – central chart with st st at sides.

Keeping sts correct and repeating the 20 row patt rep throughout, cont as set, shaping sides by inc 1 st at each end of next and every foll 4th row to 103 [105: 107: 109: 111] sts, then on every foll 6th row until there are 109 [113: 117: 121: 125] sts, taking inc sts into st st.

Cont straight until sleeve meas 53 [55: 57: 59: 61] cm, ending with RS facing for next row.

### Shape top

Keeping patt correct, cast off 2 [2: 3: 3: 3] sts at beg of next 6 [2: 26: 22: 18] rows, then 3 [3: 4: 4: 4] sts at beg of foll 22 [26: 2: 6: 10] rows. 31 sts.

### Shape saddle strap

#### Left sleeve only

Cast off 10 sts at beg of next row, then 5 sts at beg of foll row. 16 sts.

#### Right sleeve only

Cast off 5 sts at beg of next row, then 10 sts at beg of foll row. 16 sts.

#### Both sleeves

**Next row (RS):** K3, (P2, K2) 3 times, K1.

**Next row:** K1, (P2, K2) 3 times, P2, K1.

Rep last 2 rows until saddle strap meas 16 [18: 20: 22: 23] cm from last set of cast-off sts, ending at front neck edge. (This is after a RS row for left sleeve, or a WS row for right sleeve.)

### Shape neck

Cast off 9 sts at beg of next row. 7 sts.

Dec 1 st at neck (cast-off) edge of next 6 rows.

Fasten off rem st.

### MAKING UP

Press as described on the information page.

Join all saddle shoulder and armhole seams using back stitch, or mattress stitch if preferred, as folls: Matching

fasten-off point of sleeve saddle strap to marker along back neck edge, sew back row-end edge of saddle strap to back shoulder edge, then sew shaped cast-off edge of sleeve to back armhole edge. In similar way, sew front row-end edge of saddle strap to front shoulder edge, then sew shaped cast-off edge of sleeve to front armhole edge.

### Neckband

With RS facing and using 3¼mm (US 3) circular needle, beg and ending at left back saddle shoulder seam, pick up and knit 16 sts from end of left saddle strap (this should be 1 st for each st of saddle strap), 7 sts down left side of neck, 26 [26: 28: 28: 30] sts

from front, 7 sts up right side of neck, 16 sts from end of right saddle strap (this should be 1 st for each st of saddle strap), then 28 [28: 30: 30: 32] sts from back (between markers). 100 [100: 104: 104: 108] sts.

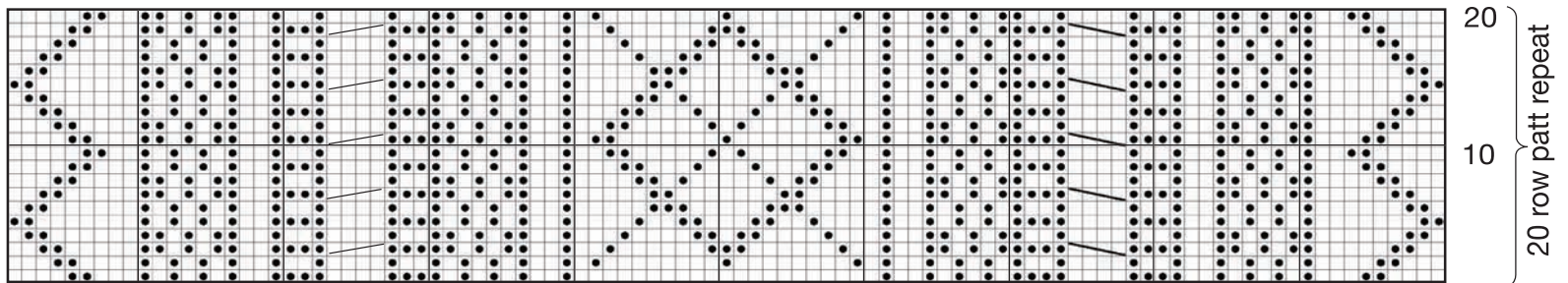
**Round 1 (RS):** P1, \*K2, P2, rep from \* to last 3 sts, K2, P1.

Rep this round 6 times more.

Cast off in rib.

See information page for finishing instructions.

## Body & Sleeve Chart



### key

- K on RS, P on WS
- P on RS, K on WS
- C4B
- C4F

