

## Welcome to Manchester

Manchester now offers new coach friendly facilities for short, medium and longer stay parking.

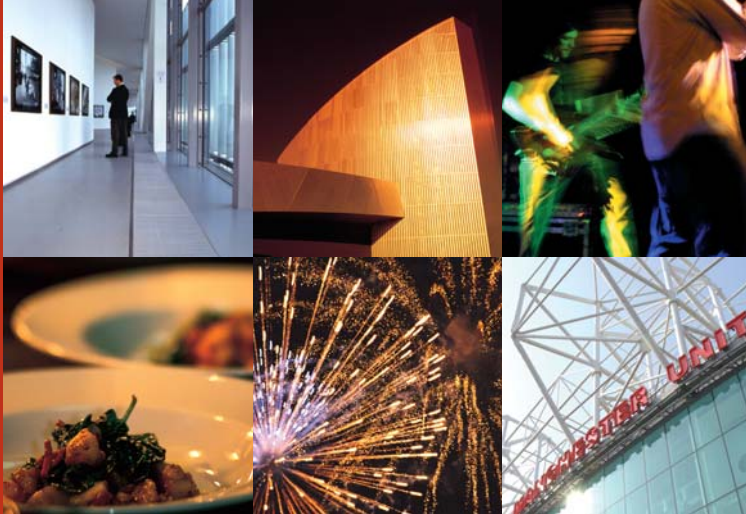
The regional capital of the Northwest, Manchester offers something for everyone. More and more people are visiting Manchester by coach to enjoy first class shopping, entertainment, restaurants, cultural celebrations, festivals and world class sporting events.

A shopper's paradise, Manchester offers an unrivalled shopping experience with exclusive designer brands and the largest number of independent designer boutiques outside London. Throughout the year, Manchester also hosts a superb variety of unique speciality markets.

With over 30 nationalities of cuisine in over 200 restaurants, cafés and bars around the city centre, there's always an excellent variety of food and drink for group visitors. Whether a light bite for lunch or special evening meal, Manchester has the place to suit your group's taste buds and budget.

Entertainment is part of the city's culture and during the year the city's streets and public spaces become a stage for theatre, live music and flamboyant events. Access for coach groups to these events, attractions and venues has been greatly improved. Coaches can now drop off and pick up passengers close to Manchester's museums, galleries, theatres, attractions and sporting venues.

For further information about what's on in Manchester, please visit [www.manchesterlive.co.uk](http://www.manchesterlive.co.uk) or [www.destinationmanchester.com](http://www.destinationmanchester.com)



## General advice for coaches

- Arrive early to drop off your passengers and unload the coach
- Make full use of telephones and radios to ensure groups are ready to be picked up
- Stay with your vehicle at all times when parked at short stay drop-off points and medium stay coach stands
- Do not obstruct traffic
- Any instructions to move on by Police or city centre wardens must be obeyed
- Only drop-off and pick-up at designated points

For more information on parking guidelines, contact Manchester Parking on 0161 234 4111.

It is illegal to leave your engine running while parked. Please consider residents, shops and businesses and switch engines off while stationary.

Please note: every effort has been made to ensure that the information contained in this leaflet is correct at the time of publication. However, Marketing Manchester and Manchester City Council cannot accept responsibility for errors, omissions or changes.

If you notice any errors or omissions please contact [ian.hawkins@marketing-manchester.co.uk](mailto:ian.hawkins@marketing-manchester.co.uk)

## What you should know about parking restrictions in Manchester

A Controlled Parking Zone (CPZ) operates within Manchester city centre. Waiting restrictions apply to this area and zone entry signs give details of when the restrictions operate (Monday to Saturday, 8am-6pm).

Designated parking bays operate within the zone for different types of waiting and loading requirements; for example, pay and display bays, goods vehicle loading bays, bus stops and taxi ranks.

The following are specific provisions for coach operators:-

### Short stay coach drop-off bays

Located near city centre venues (see map overleaf), these bays are for the dropping off / picking up of passengers only, for a maximum of 15 minutes. They offer safe, pleasant routes to and from major attractions.

### Medium stay coach stands

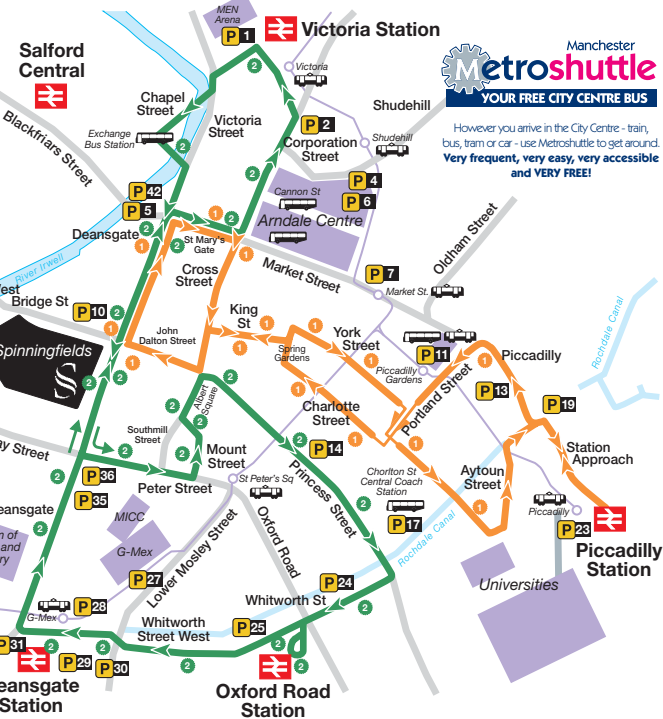
Located on the outskirts of the city centre, these stands can be occupied for a maximum of 4 hours for coach parking whilst concerts and events are taking place.

### Longer stay off-street coach parking

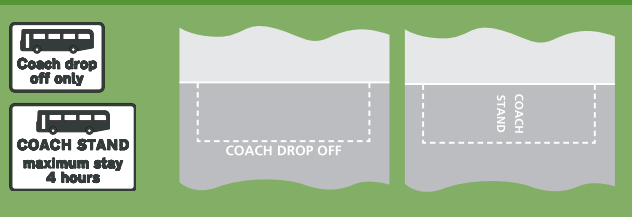
Located at the City of Manchester Stadium, Manchester Velodrome, Sheffield Street Car Park and Imperial War Museum North (see The Quays map). These facilities are for parking for longer than 4 hours on a pre-booked basis. See overleaf for full details

## Metroshuttle bus service

Manchester has a free bus service operating two routes green and orange around the city centre (with a third, purple route due to begin soon). The Metroshuttle operates from 7am-7pm Monday to Saturday and 10am-6pm Sunday, approximately every 10 minutes taking visitors from car parks, stations and tram stops around the city centre's main attractions. See map below and for further information please visit [www.gmpte.com](http://www.gmpte.com).



All new coach parking bays are clearly marked. Look out for the following signs and road markings:



## Christmas Markets

Special arrangements are in place for the duration of the Christmas Markets due to the limited space in and around Albert Square. Coaches visiting Manchester's Christmas Markets need to contact Manchester Parking on 0161 234 4111.



## Information Services

Manchester Visitor Information Centre  
 Town Hall Extension, Lloyd Street. REF. D4  
 T. 0161 234 3157 F. 0161 236 9900  
 E. [manchester.visitor.centre@notes.manchester.gov.uk](mailto:manchester.visitor.centre@notes.manchester.gov.uk)  
 W. [www.destinationmanchester.com](http://www.destinationmanchester.com)  
[www.manchesterlive.co.uk](http://www.manchesterlive.co.uk)

marketing Manchester  
 The Tourist Board for Greater Manchester

MANCHESTER CITY COUNCIL

manchester city centre management company

cpt

The information and design of this guide are copyright of Marketing Manchester. No part may be reproduced in part or wholly by any means, electronic or mechanical, without prior permission of the publishers in writing. Photography credits [www.manchesterimages.com](http://www.manchesterimages.com)

# manchester coach parking



DISCOVER englandsnorthwest

# Coach parking bays

## Short stay drop-off bays

- 1 Miller Street  
9 bays REF. E2
- 2 Todd Street  
2 bays REF. D2
- 3 Greengate  
9 bays REF. C2
- 4 Cross Street  
2 bays REF. D3
- 5 Portland Street  
1 bay REF. E3
- 6 Portland Street  
2 bays REF. E4
- 7 Portland Street  
3 bays REF. E4
- 8 Chorlton Street  
2 bays REF. E4
- 9 Princess Street  
1 bay REF. D4
- 10 Oxford Street  
2 bays REF. D5
- 11 John Dalton Street  
2 bays REF. C4
- 12 Lower Mosley Street  
3 bays REF. C5
- 13 Peter Street  
1 bay REF. D4
- 14 Byrom Street  
(6pm-8am only)  
2 bays REF. B4
- 15 Liverpool Road  
2 bays REF. B5
- 16 Blackfriars Street  
1 bay REF. C3

## Medium stay drop-off bays

- 17 Cheetham Hill Road  
(6.30pm-8am only)  
9 bays REF. D1
- 18 Water Street  
3 bays REF. A4
- 19 Great Ducie Street  
(6.30pm-8am only)  
3 bays REF. C1
- 20 Great Bridgewater Street  
2 bays REF. D5
- 21 Charles Street  
2 bays REF. E5
- 22 Store Street  
7 bays REF. F4
- 23 Lever Street  
(pre-book through GMPTe)  
T. 0161 242 6933  
4 bays REF. E3
- 24 St Peter's Square  
(6pm-8pm only) 2 bays REF. D4

## Longer stay/overnight pre-book coach parking

- 25 Sheffield Street - £6  
T. 0161 234 4111 REF. G4
- 26 City of Manchester Stadium - £15  
T. 0161 438 7609  
F. 0161 438 7999  
See Sportcity map
- 27 Manchester Velodrome - £11  
T. 0161 223 2244  
F. 0161 230 2309  
See Sportcity map
- 28 Imperial War Museum North - £15  
T. 0161 836 4000  
F. 0161 836 4090  
See The Quays map
- 29 Lancashire Cricket Club - £15  
T. 0161 282 4028  
F. 0161 282 5533  
See The Quays map

# City centre hotels

- Alias Hotel Rossetti \*\*\*\*  
T. 0161 247 7744 REF. E4
- Arora International Hotel  
T. 0161 236 8999 REF. D4
- Britannia Hotel \*\*\*\*  
T. 0161 228 2288 REF. E4
- Britannia Sachas \*\*\*  
T. 0161 228 1234 REF. E3
- Campanile Hotel & Bistro Restaurant \*\*  
T. 0161 833 1845 REF. A4
- Castlefield Hotel \*\*\*  
T. 0161 832 7073 REF. B5
- Days Inn \*\*\*  
T. 0161 955 8062 REF. E5
- Gardens Hotel \*\*\*  
T. 0161 236 5155 REF. E3
- Hatters  
T. 0161 236 9500 REF. F3
- Ibis Manchester  
T. 0161 272 5000 REF. E5
- Jarvis Piccadilly  
T. 0161 236 8414 REF. E4
- Jurys Inn Manchester \*\*\*  
T. 0161 953 8888 REF. C5
- Lowry Hotel \*\*\*\*\*  
T. 0161 827 4000 REF. B3
- Malmaison \*\*\*  
T. 0161 278 1000 REF. E4
- Manchester Travelodge  
T. 0870 085 0950 REF. C2
- Midland Hotel Manchester (The) \*\*\*\*\*  
T. 0161 236 3333 REF. D4
- Mitre Hotel \*\*\*  
T. 0161 834 4128 REF. D2
- Monroes Hotel ♦  
T. 0161 236 0564 REF. F4
- Novotel Manchester Centre \*\*\*  
T. 0161 235 2200 REF. D4
- Palace Hotel (The) \*\*\*\*\*  
T. 0161 288 1111 REF. D5
- Place Apartments \*\*\*\*\*  
T. 0161 778 7500 REF. F4
- Premier Lodge MEN Arena  
T. 0870 990 6504 REF. C2
- Premier Lodge G-MEX  
T. 0870 990 6444 REF. D5
- Premier Lodge G-MEX 2  
T. 0870 700 1490 REF. C6
- Premier Travel Inn  
T. 0870 238 3315 REF. D5
- Princess on Portland \*\*\*  
T. 0161 236 5122 REF. D4
- Radisson Edwardian Hotel  
T. 0161 835 9929 REF. C4
- Rembrandt Hotel \*\*\*  
T. 0161 236 1311 REF. E4
- Renaissance Manchester Hotel \*\*\*\*\*  
T. 0161 831 6000 REF. C3
- Stay Inn Manchester (The) \*\*\*  
T. 0161 907 2277 REF. B2
- Somerset Atrium  
T. 0161 235 2000 REF. E5
- Thistle Manchester \*\*\*\*\*  
T. 0161 228 3400 REF. E4
- Victoria & Albert Hotel \*\*\*\*\*  
T. 0161 832 1188 REF. B4
- YHA Manchester \*\*\*  
T. 0870 770 5950 REF. A5

# Attractions

- The Bridgewater Hall  
T. 0161 950 0000 REF. C5
- Central Library  
T. 0161 234 1900 REF. C4
- Manchester Art Gallery  
T. 0161 235 8888 REF. D4
- Manchester Cathedral Visitor Centre  
T. 0161 835 4030 REF. D2
- Manchester Evening News Arena  
T. 0161 950 5000 REF. D1
- Manchester Town Hall  
T. 0161 234 3157 REF. D4
- Museum of Science & Industry in Manchester  
T. 0161 832 2244 REF. B4
- G-Mex / Manchester International Convention Centre  
T. 0161 834 2700 REF. C5
- Opera House  
T. 0161 245 6666 REF. C4
- Palace Theatre  
T. 0161 245 6666 REF. D5
- People's History Museum  
T. 0161 839 6061 REF. B3
- The Printworks  
T. 0871 230 5556 REF. D2
- Royal Exchange Theatre  
T. 0161 833 9833 REF. D3
- Urbis  
T. 0161 605 8200 REF. D2

For further information on accommodation and attractions visit [www.destinationmanchester.com](http://www.destinationmanchester.com)



# Sportcity

